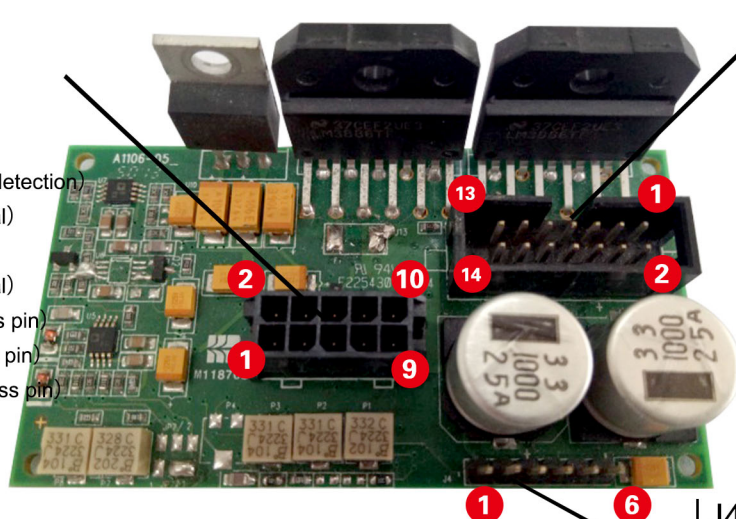
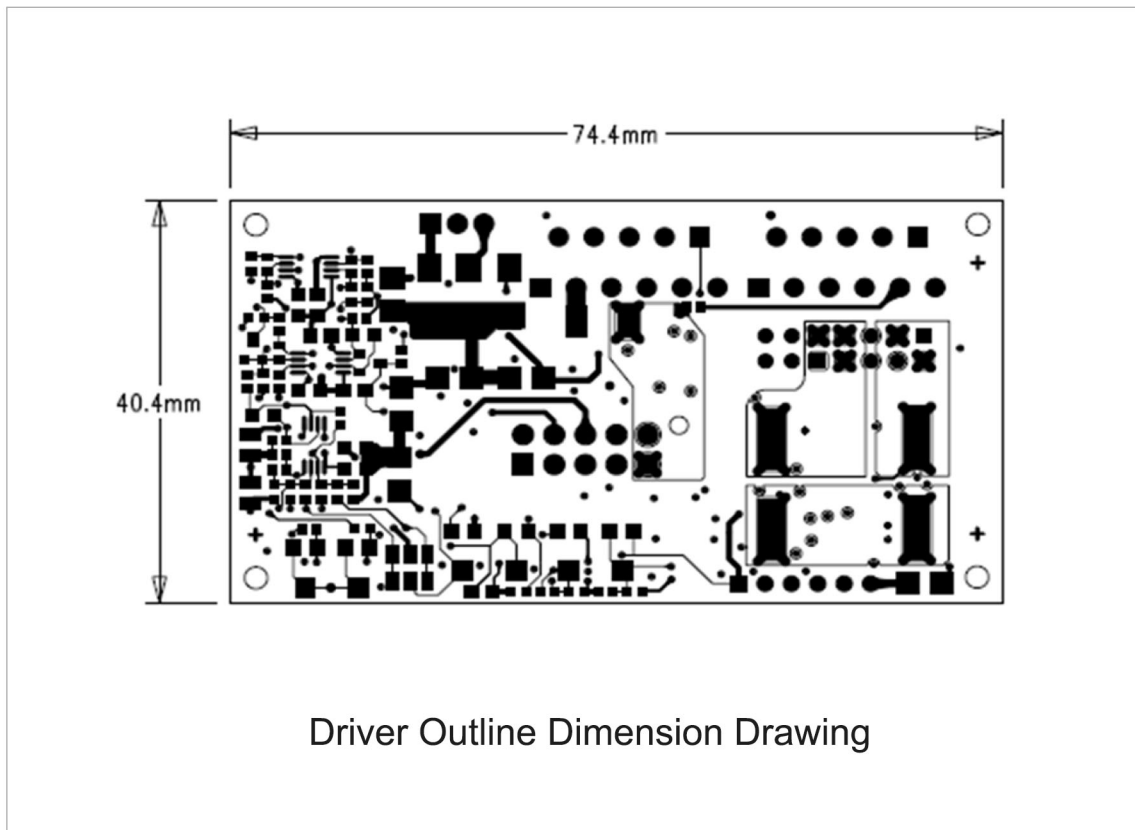


# Analog Driver Board



### J1: Signal control port

- Pin1 - Pin3: +15V
- Pin4 - Pin6: GND
- Pin7 - Pin9: -15V
- Pin10: OV\_I\_D-FD (Alarm feedback signal)
- Pin11: NC (Hang in the air)
- Pin12: POSA (Differential signal+)
- Pin13: NC (Hang in the air)
- Pin14: POSB (Differential signal-)

### J2: Motor interface

- Pin1: NTC (Motor overheating signal detection)
- Pin2: POS1 (Photocell feedback signal)
- Pin3, 5, 7, 8: GND Power Ground
- Pin4: POS2 (Photocell feedback signal)
- Pin6: LED\_AGC (LED positive access pin)
- Pin9: MOTOR+ (Motor positive access pin)
- Pin10: MOTOR- (Motor negative access pin)

### J4: Signal test interface

- Pin1: POS\_FB (Motor position feedback signal)
- Pin2: CMD-ERR (Instruction error signal)
- Pin3: POS\_CMD (Position instruction signal)
- Pin4: LED\_D (Light voltage test pin)
- Pin5: MOTOR-V (Motor current sampling signal)
- Pin6: GND (Power Ground)

深圳市大族思特科技有限公司  
Shenzhen Han's Scanner S&T Co.,Ltd.

+86-(0)755-23041055  
www.hansscanner.com  
hansscanner@hanslaser.com

深圳市宝安区福永镇重庆路128号大族激光4栋4楼  
4F, Building 4, Han's Laser Production Base, No. 128, Chongqing Road,  
Fuyong Street, Baoan District, Shenzhen City, Guangdong, P.R. China.



**HAN'S SCANNER**  
大族思特

